

MEADOWBANK MATTERS



Councillor Desley Simpson and Orākei local board chair Kit Parkinson inspect a 'model fatberg' held by Watercare's local board and stakeholder manager Brent Evans.

Keep local waterways clean

Recently, one of our maintenance crews attended a call-out by the railway lines beside Tahapa Reserve, Meadowbank.

They found wastewater overflowing into Purewa Creek. Acting quickly, our crew worked to find out what the problem was. They discovered the public wastewater pipe was blocked with fat and rubbish, causing wastewater to spill into a nearby stormwater pipe and out into the creek.

We call such instances 'dry weather' overflows. They occur when local residents and businesses pour fat down the sink and flush rubbish down the toilet, as these things don't break down in water. Instead, they form 'fatbergs' that block pipes and cause overflows. They are not caused by poorly maintained or undersized wastewater pipes.

Turn the page to find out how you can help reduce local overflows.

Coming soon

We are working with Auckland Council to ensure the wastewater and stormwater infrastructure are progressively upgraded to support growth in Meadowbank.

Later this year, council will inspect properties in western Meadowbank to ensure their stormwater drainage is correctly installed to modern standards. For example, they will be checking to make sure that downpipes connect to their stormwater network, rather than our wastewater network.

When stormwater enters the wastewater network, it can cause 'wet-weather' overflows. This is because the wastewater network is designed to carry wastewater only. In heavy rain, the volume of stormwater that drains from the average roof is equivalent to the wastewater flows from more than 40 households. Auckland Council will work with home owners with drainage issues to have them remedied.

Meanwhile, we will undertake improvement works in the wastewater network to reduce the frequency of overflows during wet weather.

Help to reduce local overflows

Every time you flush the toilet, pull the plug from a sink or have a shower, the wastewater drains into your private plumbing and out to our network.

When people pour fat down the sink or flush rubbish down the toilet, some of this can build up in private and public pipes, causing overflows which can be harmful to our health, harbours and waterways. This is why it's important for all of us to think about what we pour or flush down our private drains.

Did you know?

78% of overflows during fine weather are caused by people pouring fat down the sink, and flushing rubbish down the toilet, together with tree roots getting into pipes.



Toilet

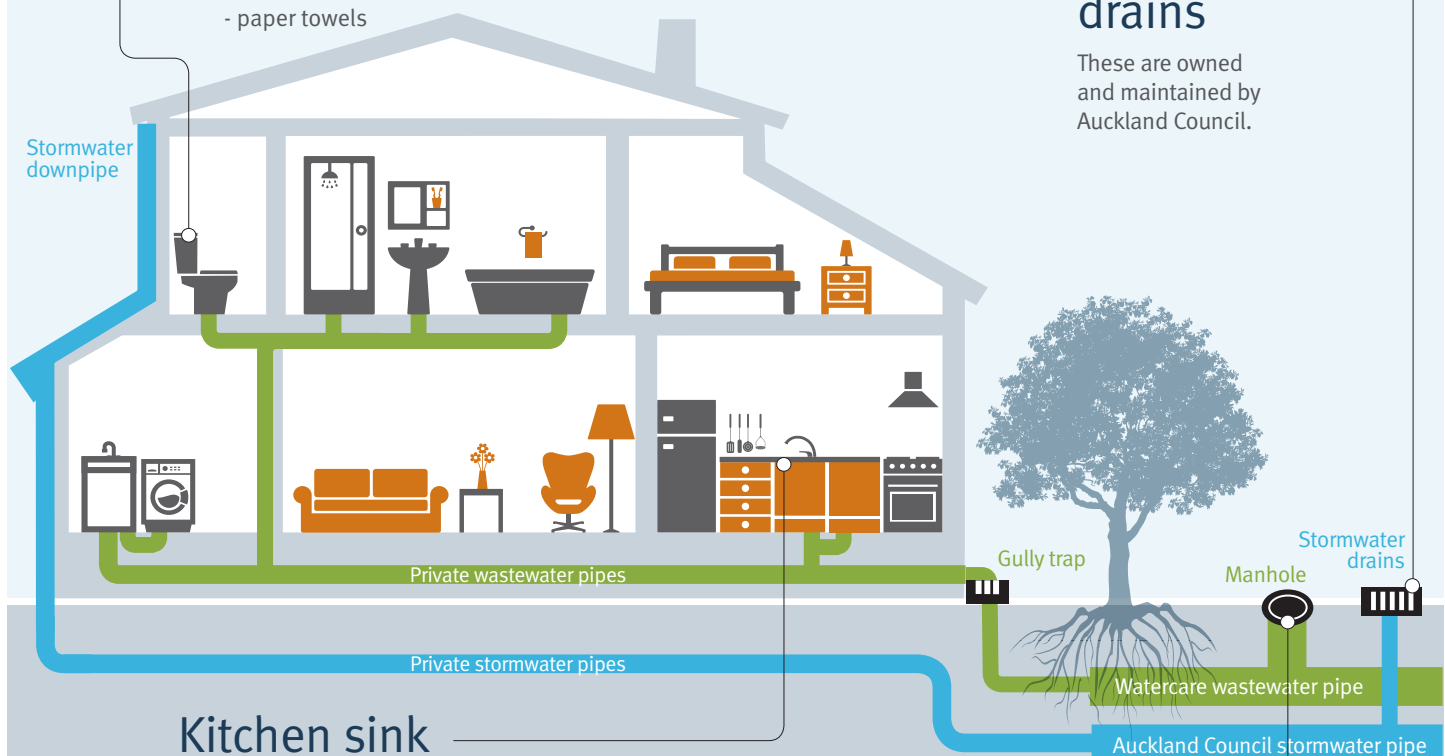
Flush away pee, poo and toilet paper

Don't flush:

- wet-wipes
- sanitary products
- nappies
- rags
- paper towels

Stormwater drains

These are owned and maintained by Auckland Council.



Kitchen sink

Let cooking oils and fats cool, then scrape the fat into the bin.

Don't pour hot cooking oils and fats down the sink. Once cool, the fats harden and create blockages in the wastewater pipe.

Manholes

Give us a call

If you come across an overflow from a manhole, please phone us on (09) 442 2222. We're available 24 hours a day, seven days a week.

Contact us

If you would like to provide your feedback on any of the stories in *Meadowbank Matters*, please phone our communications team on (09) 442 2222 or email info@water.co.nz.