

Presentation to MBSJRA on Remuera & St Johns Roads

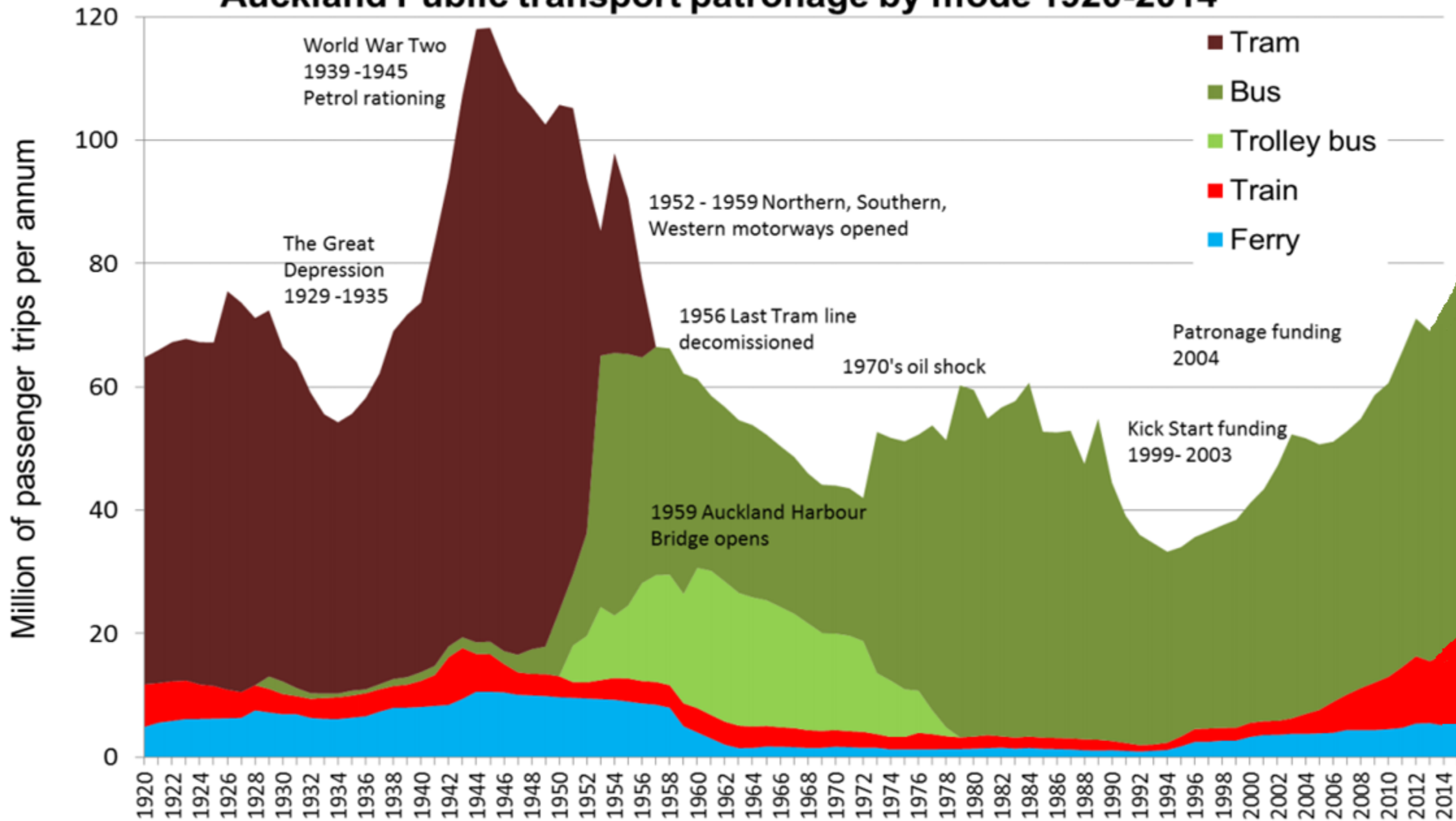
Past, Present & “Back to the Future”

24 June 2015

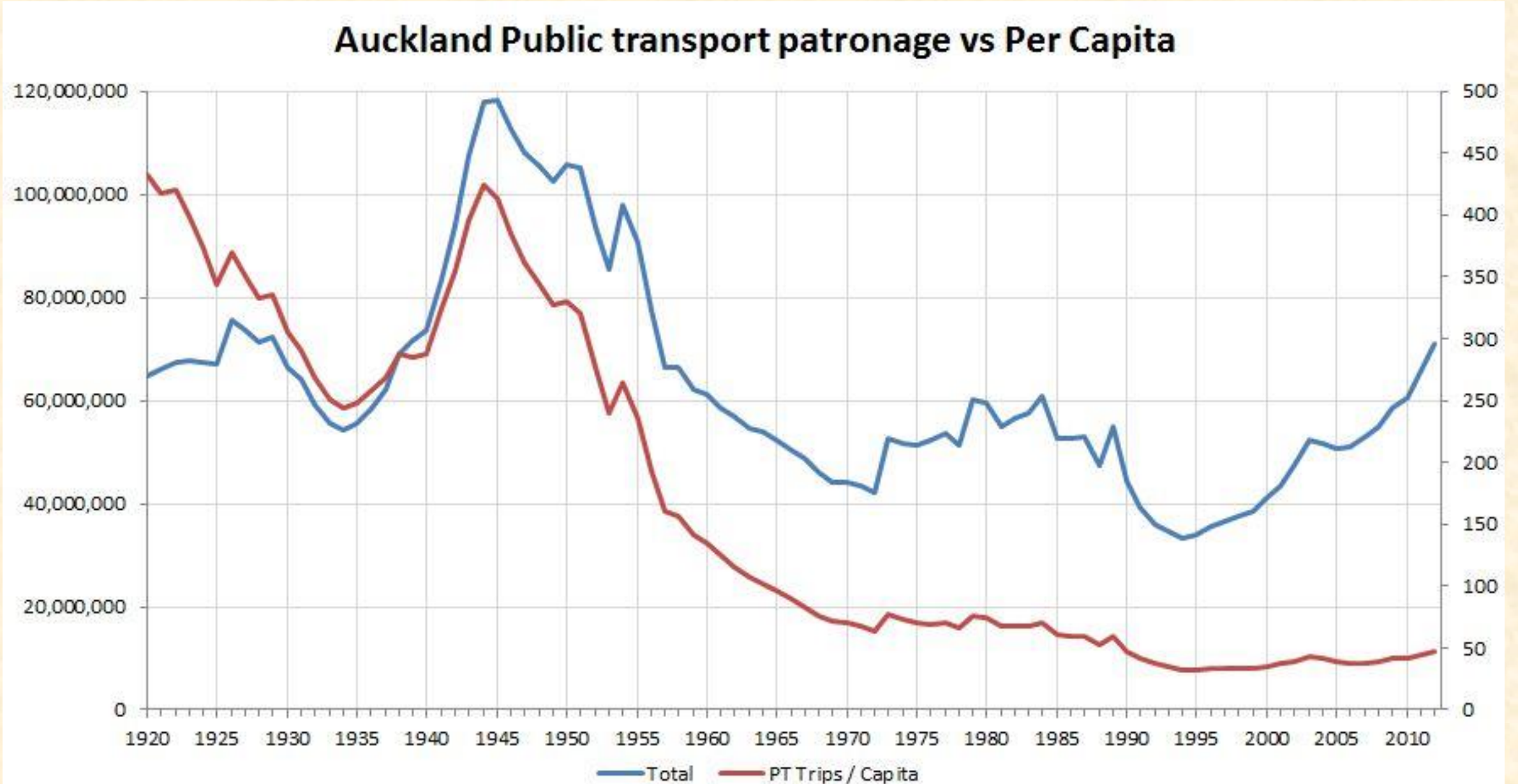
Imagine if:

- You & your children could cycle to school or work safely
- Kids could get safely themselves to their friends and activities
- It cost only \$2 to get to Newmarket or Remuera & back on the bus
- The buses were so frequent & fast you've never used a timetable
- Meadowbank village was a great place to stop & shop
- You don't want/need to own even one car - let alone two
- Getting around is so easy you can change jobs & live where you like
- You don't have to teach your kids to drive

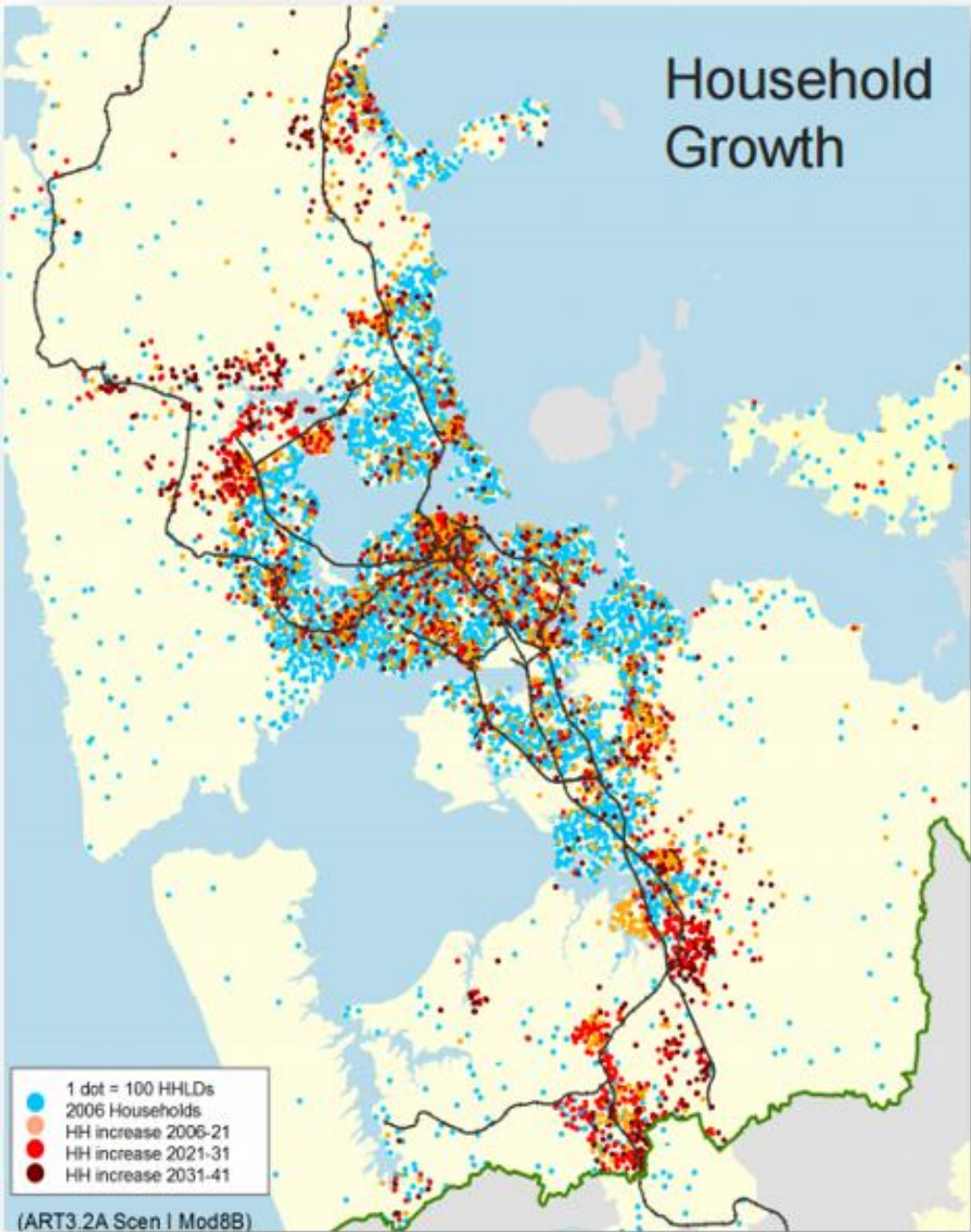
Auckland Public transport patronage by mode 1920-2014



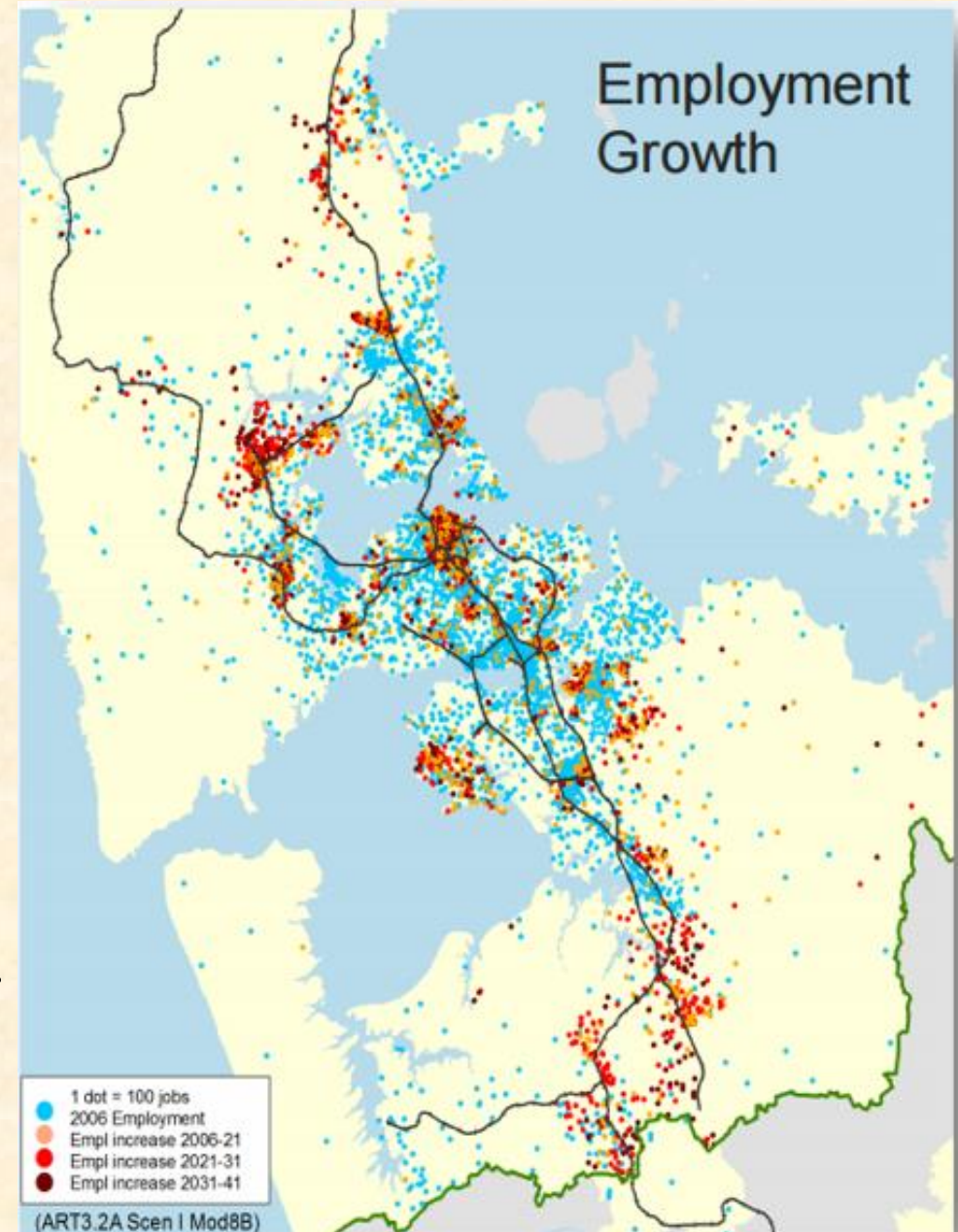
We have come a long way - **down** since WWII



The Growth Challenges

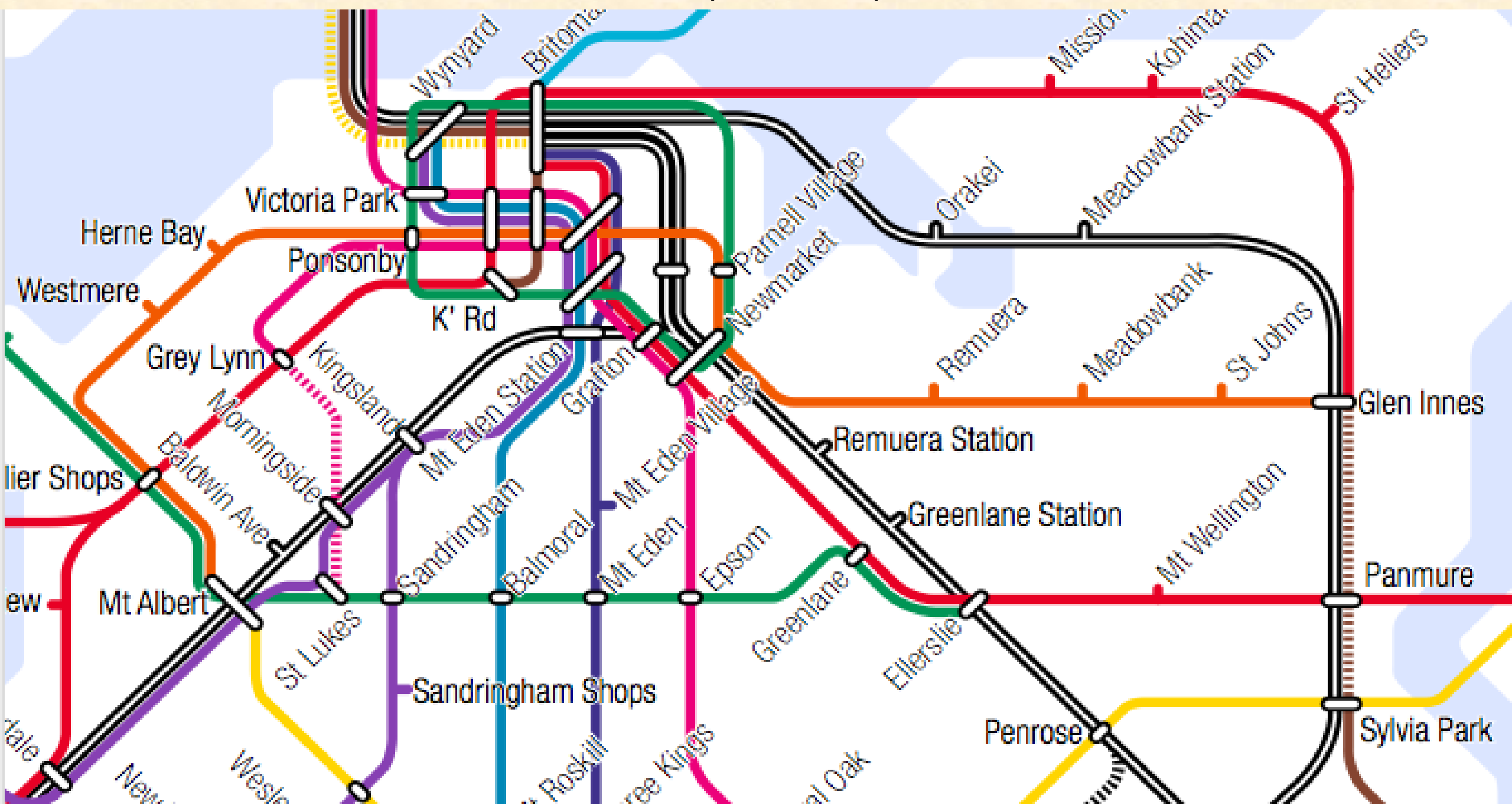


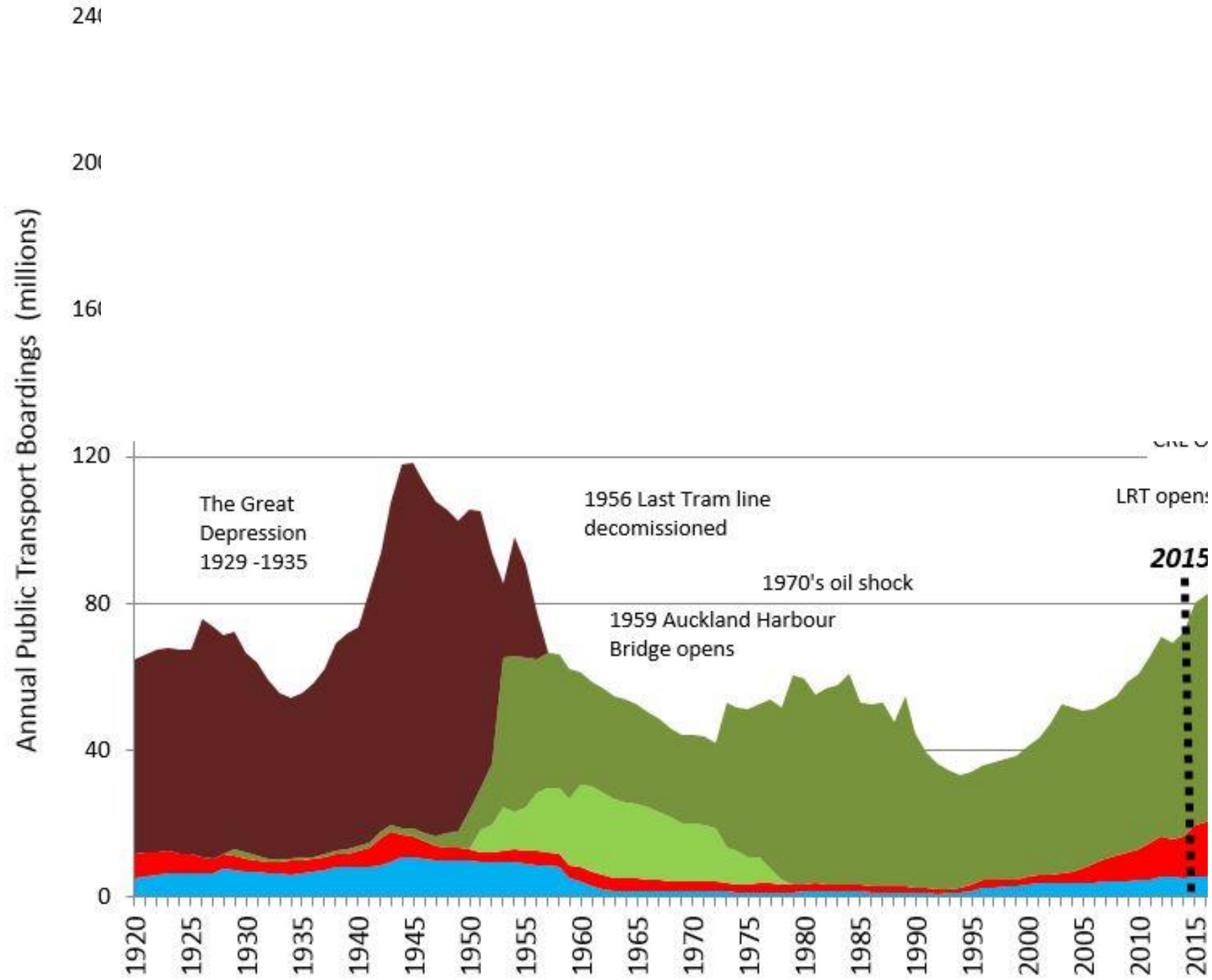
<-We'll live here



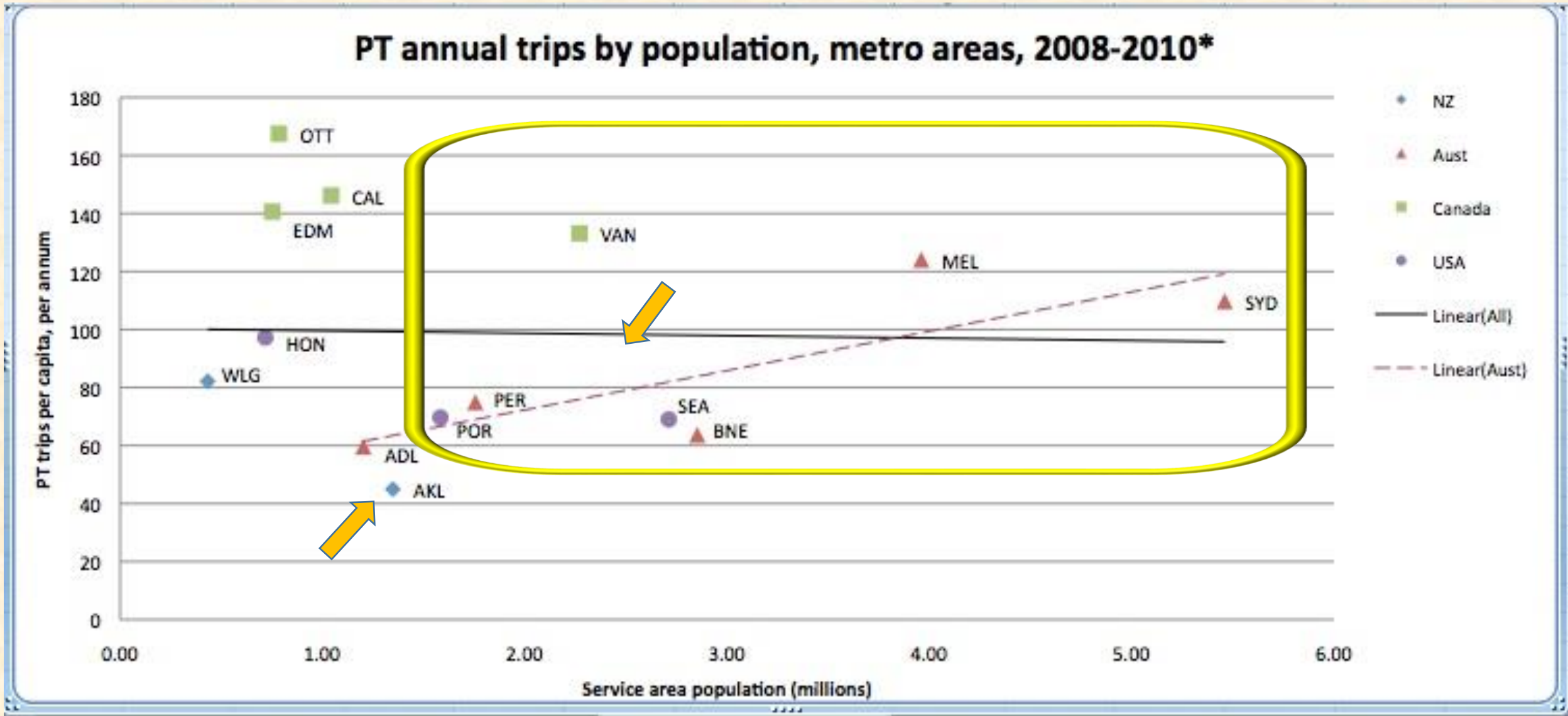
And work here ->

The Auckland Frequent Transport Network





Even so we have a long way to grow our usage!



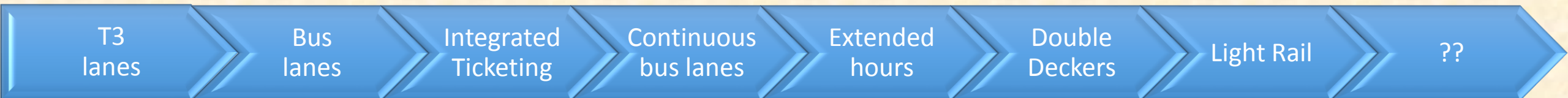
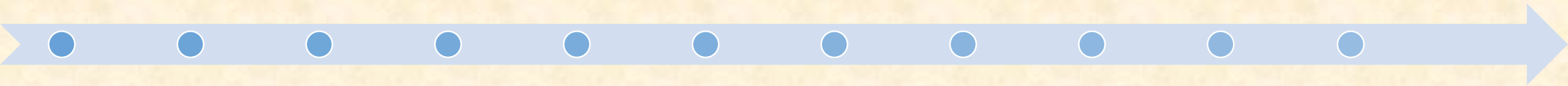
The cities inside the shape we compete with to keep our young people & jobs & attract new ones
Without good public transport, our people & jobs won't stay & new ones won't replace them

Remuera Road – Growth challenges & remedies






2015

2040+



Typical capacities – Road, Bus, Light rail, Commuter rail

Modal Characteristics	Vehicle lane	Bus shared path (T2/T3)	Bus lane separate	Busway priority	Light rail shared path	Light rail priority	Commuter rail
Maximum capacity (people/hr)	1,200 	2,500 	4,000 	6,000 	12,000 	18,000 	20/25,000 
Average speed (km/h)	14-19	10-14	14-18	15-22	15-22	18-40	18-40
Cost (est) \$/km	n/a	n/a	<1	35	20-40	50-100	>100

Light Rail Transport - LRT

The “Back to the Future” option



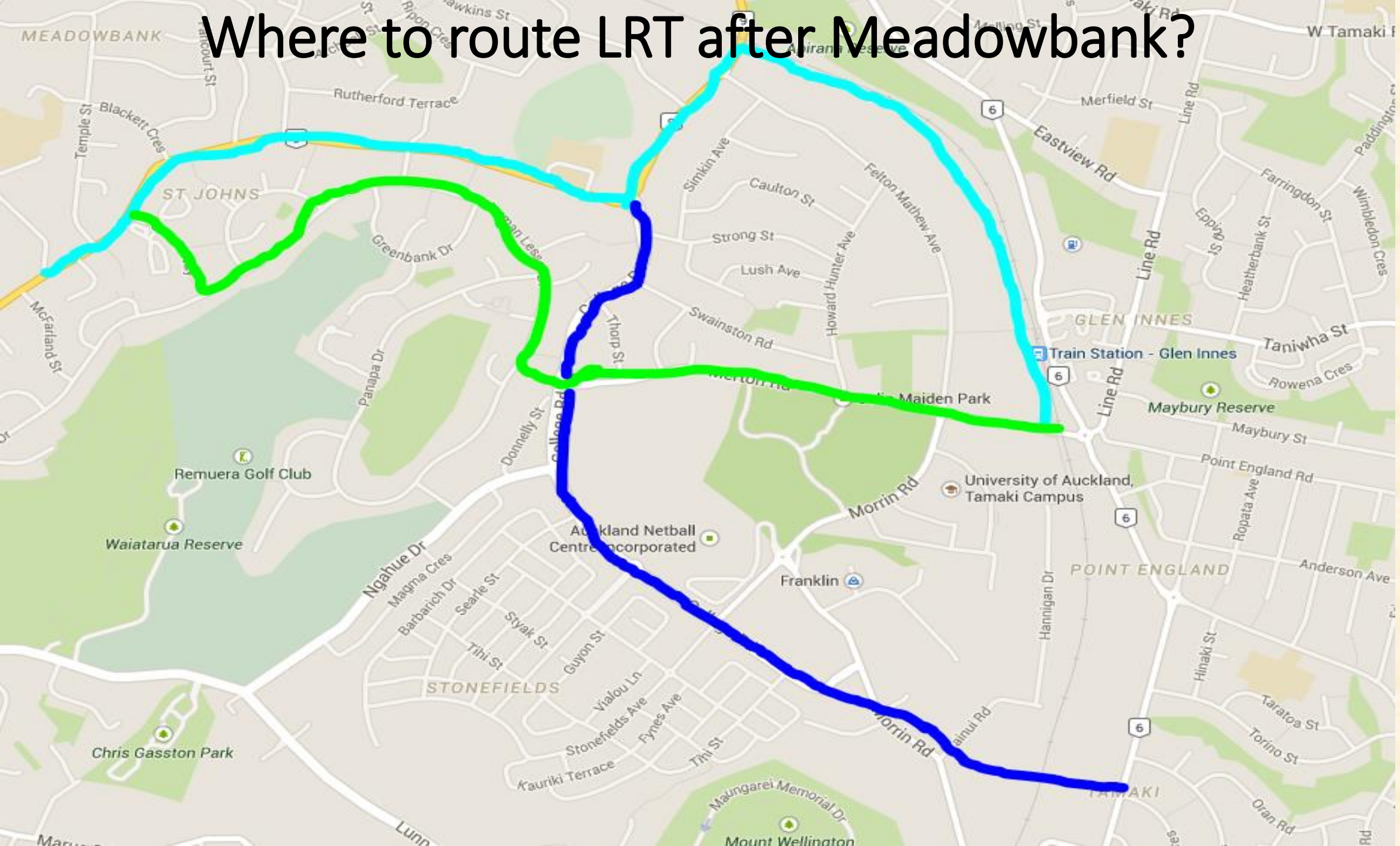
Meadowbank Tram terminus – March 20, 1956

What would LRT look like now?



Artist's impression of LRT along Dominion Road

Where to route LRT after Meadowbank?



Summary & Forecast

- Growth will happen **whether we plan for it or not – better to plan**
- Buses won't cope forever - even with Double Decker's & Bus lanes
- Back to the Future via LRT a real possibility for some suburbs
- AT plan for Remuera Rd corridor for next 20-30 years coming
- LRT using Remuera Road should be pursued by OLB & MBSJRA as a long term option to minimize intensification congestion issues